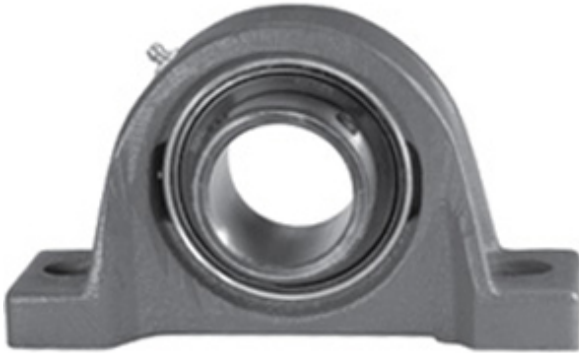




NACHI BEARINGS OF AMERICA CORP.

1.575 Inch | 40 Millimeter x 1.906 Inch | 48.42
Millimeter x 1.937 Inch | 49.2 Millimeter LINK
BELT PL3U2M40N Pillow Block Bearings



PL3U2M40N Bearing 2D drawings and 3D CAD models

Bearing No. PL3U2M40N

Category	Pillow Block Bearings
Inventory	0.0
Manufacturer Name	REXNORD
Minimum Buy Quantity	N/A
Weight	2.03
EAN	0793699548198
Product Group	M06110
Number of Mounting Holes	2
Mounting Method	Set Screw
Housing Style	2 Bolt Pillow Block
Rolling Element	Ball Bearing
Housing Material	Cast Iron
Expansion / Non-expansion	Non-expansion
Mounting Bolts	12 Millimeter
Relubricatable	Yes
Insert Part Number	UG2M40NL
Seals	Single Lip Contact
Housing Configuration	1 Piece Solid
Inch - Metric	Metric
Other Features	Single Row Standard Duty Low Base Wide Inner Race
Long Description	2 Bolt Pillow Block; 40MM Bore; 49.2MM Base to Center Height; Set Screw Mount; Ball Bearing;



NACHI BEARINGS OF AMERICA CORP.

	Relubricatable; Cast Iron; Single Lip Contact; Non- expansion
Category	Pillow Block
UNSPSC	31171511
Harmonized Tariff Code	8483.20.40.40
Noun	Bearing
Keyword String	Pillow Block
Manufacturer URL	http://www.rexnord.com
Manufacturer Item Number	PL3U2M40N
Manufacturer Internal Number	0154819
Weight / LBS	4.475
B	1.937 Inch 49.2 Millimeter
Bolt Spacing Minimum	0 Inch 0Millimeter
Actual Bolt Center to Center	5.4 Inch 136Millimeter
Bolt Spacing Maximum	0 Inch 0Millimeter
D	1.906 Inch 48.42 Millimeter
d	1.575 Inch 40 Millimeter
Nominal Bolt Center to Center	5.4 Inch 136 Millimeter